

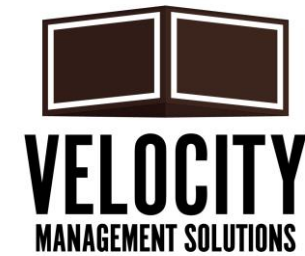
AT THE NATIONAL ALL-DOMAIN WARFIGHTING CENTER IN NORTHERN MICHIGAN



CAPABILITIES BRIEF



VELOCITY MANAGEMENT
SOLUTIONS



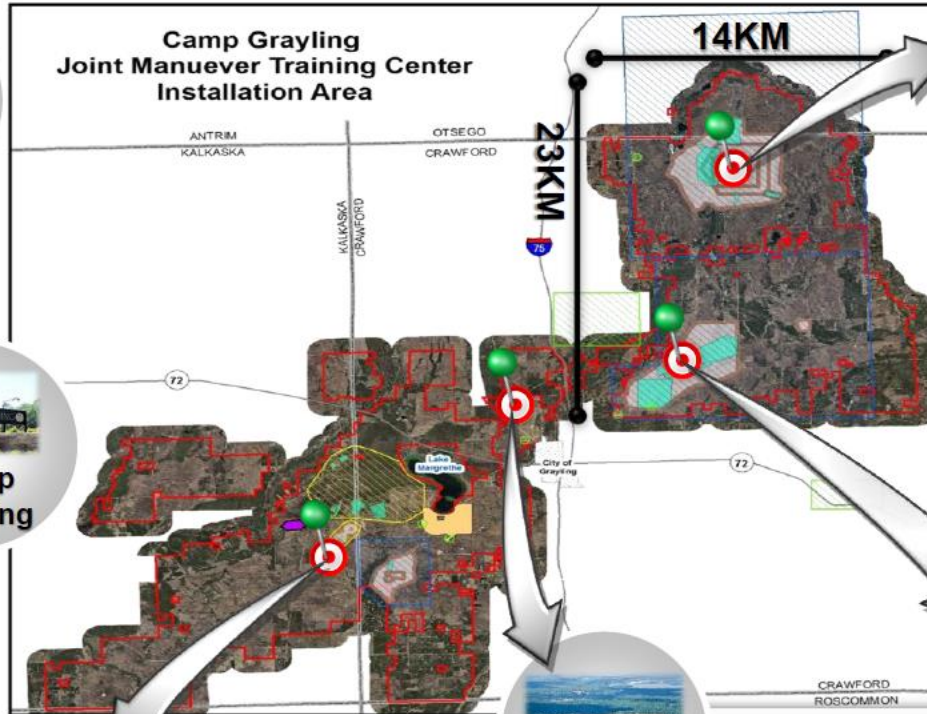


Camp Grayling Maneuver Training Center



History

Founded in 1913 when local lumber baron Rasmus Hanson donated 13,000 acres to the State of Michigan for military training. Camp Grayling has since grown to 148,000 acres.



40 Complex

Joint Training, Maneuver Live Fires, Artillery Impact Area, Special Use Airspace

- 17,000 Acres of Maneuver Space
- 10,000 Acres of Live Fire Area
- 2,800 Acres of Duded Impact Area
- All Small Arms up to MK-19, Door Gunnery
- AT-4, Javelin, and TOW Inert
- All Tube Artillery & Mortars, 104 Firing Points
- Platoon+ Combined Arms Live Fires
- Company Live Fire & Defense (Non-Stnd)
- Live Drops up to 500Lbs (MK82)
- Restricted Airspace up to 23,000 Feet

Infrastructure & Operations

- 148,000 Acres
- 8,000 Transient Bed Spaces
- 429 Buildings (1.8M sqft)
- 83 Miles of Paved Roads
- 482 Miles of Unpaved/Trails
- Contracted Fire Fighting
- Wildland Fire (Internal)
- Sewer: Lagoon System
- Domestic Water Systems
- 7 Classrooms / 2 DLCs

Logistical Movement & Support

- 3 Hours From Detroit via I-75
- 5 Hours From Chicago
- 2 Rail Spurs, 15 Cars/Spur
- 1 Rail Spur, 15 Cars
- Rail Maintenance Facility
- Class I, II, V Warehouse
- 118K sqft Total Storage
- DLA Bulk Fuel Site
- 30,000 gal DF & JP Tanks
- ASP (SA, HIMARS, NATO)

Simulations Capabilities

- Engagement Skills Trainer II
- Call-for-Fire Trainer
- BCT Individual Reality Trainer
- Unstabilized Gunnery Trainer
- Tactical Combat Casualty Care
- HMMWV Egress Trainer
- MRAP Egress Trainer
- Virtual Convoy Operations
- Virtual Battle Simulation 3



Camp Grayling



South Camp

Light Maneuver Area & Small Arms Ranges

- Qual Ranges: M9 – M240B
- Known Distance Range
- Grenade Ranges
- Light Demo Range
- Fire & Movement Range
- Infantry Squad Battle Course
- 60MM Mortar Impact Area



GAAF

Grayling Army Airfield

- 5000' Runway *Rail Spurs*
- Housing for 260 Personnel
- Dining Facility
- Bivouac Area for 300+
- Training, Office, Academic Facilities
- UAS Shadow Simulator
- 400+ Square Miles of Controlled Airspace
- Fire Barn & Municipal Fire



30 Complex MPRC

Multi-Purpose Range Complex (Heavy)

- 42,000 Acres of Maneuver Space
- 5,300 Acres Fenced
- M2 Qualification Range
- MK19 Qualification Range
- Sniper Range
- Infantry Platoon Battle Course
- Convoy Live Fire
- MLRS/HIMARS Firing Area
- UAS Operations Day/Night
- 3D Modeled for Virtual Events
- Maneuver & Training Equipment Site

Velocity Management Solutions



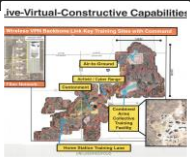
At the National All Domain Warfighting Center (NADWC). The Michigan Adjutant General (TAG) seeks to foster Defense Industry & Commercial Corporations expanded use of the NADWC for development of new innovative technologies and capabilities. Focusing on innovations that seek to make the leap from Technology Readiness Level 4 to Technology Readiness Level 5-7.

The State of Michigan, through a competitive bid process awarded to Velocity Management Solutions (VMS) an administrative contract to assist in the support and sustainment of defense innovators.

Additionally, VMS has the permission to construct, implement, install and use all varieties of technologies to support expanded use by Defense Industry & Commercial Corporations, such as data centers, SCIF's, network technologies, instrumentation, sensors.

Operating as an industry conduit, VMS has established its position as an "easy button" for Defense Industry & Commercial Corporations and has developed a full range of Managed Services enabling Defense Industry & Commercial Corporations a single point of contact, and a low-friction experience as they seek to develop their innovation from TRL 4 to TRL 7.

Defense Industry & Commercial Corporation Value Statements



You've been briefed on the NADWC (Camp Grayling) capabilities and believe the four seasons, large maneuver space, ranges, impact areas, cyber-ranges, restricted airspace, maritime capability, mock city would create value for your program and increase your program success as you cross the "Valley of Death" and move from TRL 4 to TRL 5-7



TRL's 6 & 7 means your innovation needs to integrate with individual contributors, rotational training units or a full-scale exercise to gain valuable Warfighter feedback and data, creating value for your program.

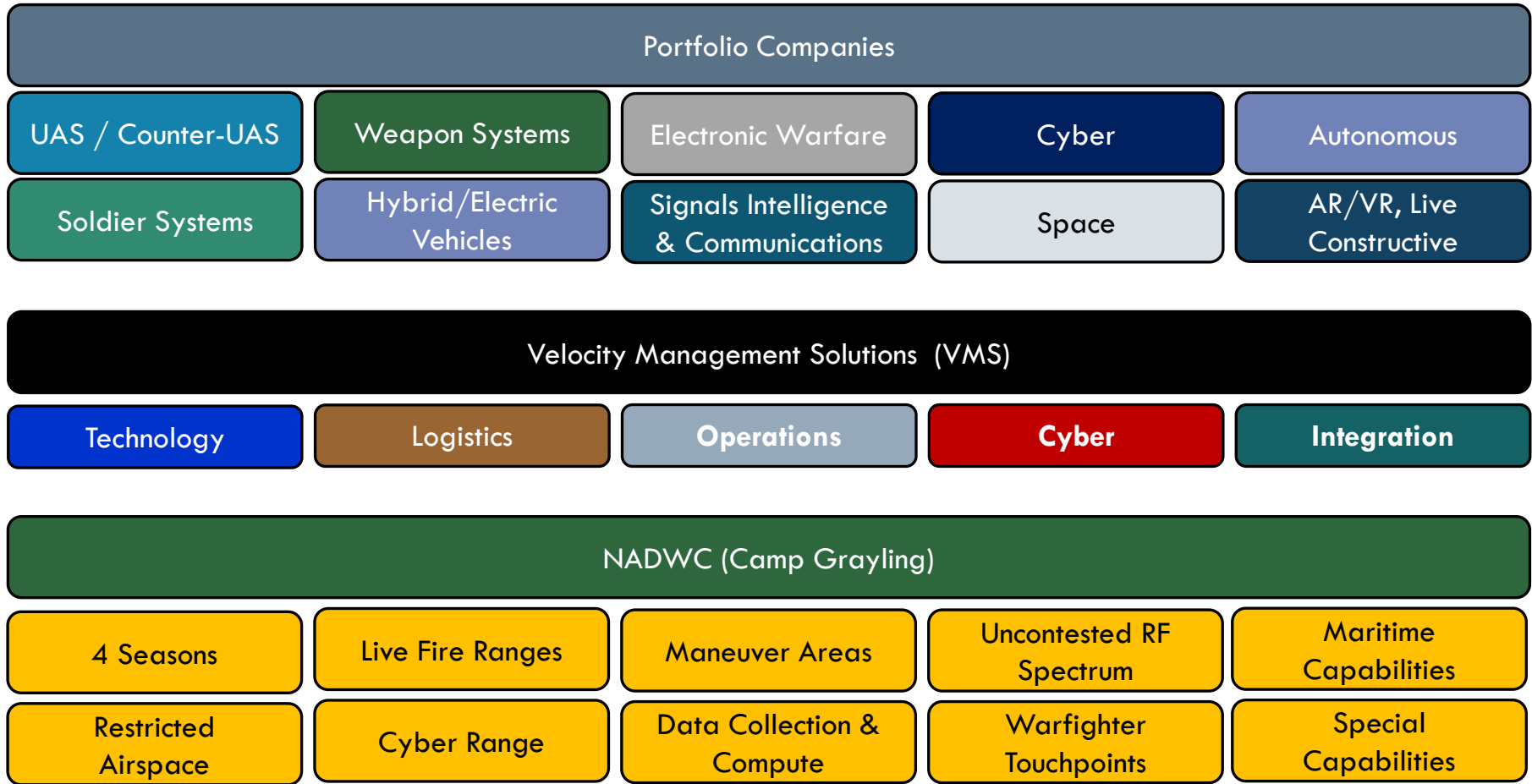


Your program generates massive amounts of data to be collected in real time and computed quickly to speed up testing iterations, maximizing the time your engineers spend in the field and making breakthroughs faster creates value for your program

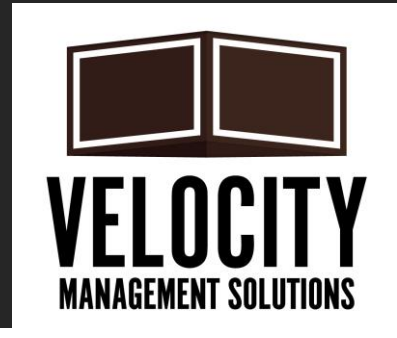


You don't want to make a big investment in time, effort or money, you simply want to get in and get out. Having an "easy button" partner would enable faster deployment of program teams, allow them to focus on program goals, streamline logistics and operations, supported with a full stack of technology creates value for your program

Full Scope Managed Services



Administrative & Sustainment Services



Program Preparation			Scheduling	On-site Sustainment
NDA's	CONOP Development	Range Safety Operations	Range Control (RFMSS)	Morning Briefing(s)
Pre-Qualification Questionnaire	Deliberate Risk Assessment Worksheet	Range Certification Memo	Deconfliction	End of Day Strength Reporting
MOA	SDZ's	Medical Response Plan	Security Gate Memo	Radio Communications
Insurance	RF Spectrum Analysis	HazMat Response Plan		Safety Operations
Master Services Agreement	Downed Aircraft Plan	Ammunition Handling Worksheet		

Additional Services



Technology	Logistics	Operations	Cyber	Integration
Core & EDGE Secure Facilities	Transportation	Onboarding	Cyber Range	Warfighter Training
Network / Spectrum	Hospitality	Range / Air Space Scheduling	CMMC Capability	Dress Rehearsal for ATEC
Compute Platforms	Food Service	Resource Scheduling	Multi-Classification Operations*	Collaboration with other VMS Members
Network & Security Operations Hub	Warehousing	Safety Operations	EW, offensive & defensive	Community
Data Storage	Coordination	Local Resources		
SCIF*		One Point of Contact		
Instrumentation & Sensors				

* SCIF & Multi-class operations are future capabilities